



NEWSLETTER ISSUE NO. 1 FEBRUARY 2017



Election of New Officers Saturday, March 25!!

CCCC Officers/Directors (interim):

President: Emmanuel Lasker

cigarchew@aol.com

Vice-President: Alexander Alekhine

wineplease@yahoo.com

Secretary: Akiba Rubinstein

neverbeenchamp@earthlink.net

Treasurer: Henry Bird

bestaccountanttilsammy@msn.com

Newsletter Editor: David Carter

carterd253@hotmail.com

Member at Large: Efim Bogoljubov

punchingbag@comcast.net

REGULAR CHESS CLUB MEETINGS:

Thursday evenings at the Methodist Church,
899 Dorset Street in South Burlington.

Registration is 7:00 – 7:25 PM with matches
starting promptly at 7:30. Call or text 802-
324-1143 for advance registration.

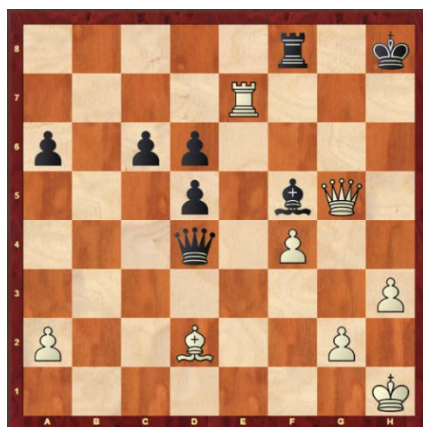
IMPORTANT SPECIAL MEETING

WHERE: Shaw's Supermarket Community Room
520 Shelburne Road, Burlington, VT 05401

WHEN: 9:00 AM, Saturday, March 25, 2017

WHY: To form the Chittenden County Chess Club.
To formally adopt bylaws and elect Officers.
Convene the first meeting of the Board.

WHO: Anyone interested in chess in Vermont.



Puzzler A



Puzzler B

The positions above are White to move and win (answers on page 5).

To Our Chess Community:

During the past several years the Club has tried different ways to increase attendance and improve the quality of chess on Thursday nights. I believe the time has come to organize the Club as a club and to find a group of dedicated chess players who want to help grow the CCCC and improve the Thursday night chess experience for everyone. You can't play a good game of chess without a plan; running a chess club should be no different.

We need to spread the work around and have a group of volunteers who the members trust to act in the best interest of the Club and chess. Anyone interested in helping to grow and improve the chess in this area, please attend the meeting on Saturday, March 25 at the Shaw's Community Room on Shelburne Road in Burlington.

Yours Truly, Dave Carter



Does the Chess Club Need a New Home?

Ted Fink

For too long Chittenden County Chess Club members have been paying far too much for the privilege of playing competitive chess. Rent at the Church is \$50 per week for our Thursday night tournament play. The club has to charge players on a weekly basis to cover the rent and, as a result, there has been no opportunity to accumulate cash reserves for other purposes.

I believe this situation is unsustainable. Dave Carter and I have undertaken a search for a much less expensive, yet accommodating, venue. We have looked at sites in So. Burlington, Williston, Burlington, Winooski and Shelburne. We have looked at town centers, recreation centers, schools, church and temple halls. The per hour cost of most of these put them out of reach. charging \$15 to \$25/ hour. Still others had restricted access in the late evening, closing by 9PM for example.

Eventually two venues were found for consideration: Waldorf High School in Shelburne and Saint Joseph's school in Burlington. Waldorf would like to have the Club use their facility, at minimal expense, so the school could offer chess playing as part of their extracurricular activities on site. Page six has a discussion of the Saint Joseph's school site.

The current enrollment at the high school is approximately 50 students. The building is on the grounds of the Shelburne Museum and is a modern post and beam structure originally built to house the Vermont Morgan Horse Museum. In 2012, the building was vacated and, after extensive renovation, the Waldorf School began to occupy the premises.

The facility is bright, modern and at \$50/month, inexpensive. The four photos to the left are of the front of building, the playing room with tables and chairs, and the lounge and kitchen. Toilet facilities are off the main hallway.



Chittenden County Chess Club Bylaws

Article 1. Name and Address

The name of this organization is the Chittenden County Chess Club, hereafter known as the "Club" or the "CCCC". The Club's mailing address is the address of the Secretary of the CCCC.

Article 2. Purpose

The purpose of the Club is to provide for the enjoyment of playing a game of tournament chess and to promote the play, study, and appreciation of the game of chess.

Article 3. Membership

3.1 Regular Members

Any person interested in playing chess may be accepted as a member of the Club by applying for membership and paying the annual dues.

3.2 Business Members

Any business which has a clear and immediate relationship to the game of chess, chess equipment, books or other supplies may become a business member by submitting an application.

3.3 Lifetime Honorary Membership

An honorary membership may be bestowed on individuals by a majority vote of the quorum present at any meeting of the Board of Directors.

3.4 Student Members

Any person who is a full-time student at any primary or secondary school, college or university in Vermont.

3.5 Dues.

Annual dues for each class of membership shall be set by the Board of Directors. Dues for each year will be due on a calendar year basis.

Article 4. Governance

4.1 Board of Directors.

The Club is governed by its Board of Directors which sets policy and carries the ultimate responsibility for the affairs of the Club to include location and times of meetings be they for business or playing of chess. The Board of Directors is comprised of the elected officers of the Club plus one additional elected at-large member.

4.2 Club Officers and Duties.

Officers shall consist of: President; Vice-President; Secretary, Treasurer and Newsletter Editor/Publisher. The Officers will serve for terms of one year and then be subject to a vote by the quorum present at the October meeting each year.

4.3 Duties of Officers.

4.3.1 The President presides at all meetings of the Club and of the Board. The President exercises general supervision of the affairs of the Club and with Board concurrence. The president is responsible for agendas at the monthly meetings.

4.3.2 Vice-President is the Librarian for the Club, overseeing the video and book collections of the Club and in the absence or incapacity of the President, will perform the duties of the President.

4.3.3 The Secretary notifies members and Directors of meetings of the Board and keeps records of these meetings. The Secretary maintains the current lists of officers, issues an annual summary report on the activities of the Club and performs the duties ordinarily associated with the offices of secretary to include:

- a) Assists the president in the preparation of an agendas for Board meetings;
- a) Functions as the Club's primary contact between the Club and the Chess world;
- b) Performs the day-to-day administrative needs of the Club;
- c) Takes and publishes minutes of the meetings in the monthly newsletter.

4.3.4 The Treasurer.

- a) Receives and disburses the funds of the Club and in general is responsible for the conduct of its financial affairs;
- b) Prepares a budget of projected income and expenses and prepares a report on the financial condition of the Club for acceptance of and distribution to the Board.
- c) Publishes a monthly Treasurer's Report in the club newsletter.
- d) Collects annual dues and maintains a list of members' registration forms;

4.3.5 Newsletter Editor/publisher.

- a) Responsible for bringing together all submissions from members assemblies, edits and readies for publication the club's monthly newsletter.
- b) Distributes via email each monthly edition to all members in good standing.

4.4 Election of Officers.

- a) At the September meeting each year the president will give warning that during the October meeting election of officers will take place and any member wishing to place his or her own or another member's name in nomination for any office in the Club may do so.
- b) At the October meeting each year a slate of officers will be presented. Any contested offices will be voted upon, the winner needing a plurality of the present members to assume the contested office. In the event there is no challenge to any Officer, that Officer will retain his/her office for at least another full year.
- c) If any officer is incapacitated, the Board of Directors will appoint a replacement to serve until the following October.

Article 5. Meetings.

5.1 General meetings of the membership are held each month or as the Board may establish. The necessary business of the Club is to be conducted at these meetings under established rules of order.

5.2 The Annual Meeting is held in October of each year, and provides for the annual reports of the officers and committee chairs, for election of new officers and for such other business as Club members in good standing or the Board may wish to consider.

5.3 Meetings of the Board of Directors are held at least two times a year at such times and places as the President or at least four Directors may decide. Sixty percent of the Board, to include at least 2 officers, constitutes a quorum for meetings of the Board. All meetings of the Board are open to all dues-paying members in good standing. Only board members will have voting rights on issues coming before the board.

Article 6. Quorum.

- 6.1 Those members present at regular meetings of the membership constitute a quorum.
- 6.2 Thirty percent (30%) of the members in good standing will constitute a quorum at the annual meeting.

Article 7. Fiscal Matters.

- 7.1 The fiscal year of the Club is coincident with the calendar year.
- 7.2 The official bank of the Club is designated by the Board (currently Citizens Bank). Only the Treasurer and the President may conduct Club business with that bank.
- 7.3 Although there is no formal annual audit of the financial records and practices of the Club, the Treasurer will make a financial report at each general meeting and make available to the Board, upon request at any time, all financial records to include bank statements, receipts, deposit slips and any other records the Board may deem appropriate in regards the financial status of the Club.
- 7.4 No member of the Club may use any property or commit to be spent any money of the Club without the consent of a quorum of the Board.

Article 8. Benefits and Dissolution.

- 8.1 Net income received from activities conducted or sponsored by the Club, or assets given to it, will be applied to the operation of the Club and the support of its purpose. No asset of the Club may be used for the personal monetary benefit of any of the Club Directors, officers, or other members.
- 8.2 In the event of the dissolution of the Club the Board of Directors, after payment of all debts and obligations, will send all the remaining assets to a Vermont organization of similar purpose. If no suitable organization can be found, the remaining funds will be transferred to United States Chess Federation for the support of chess programs.

Article 9. Amendments.

These Bylaws may be amended at the annual meeting of the Club by a two-thirds (66%) majority of the members present, provided that the proposed amendments have been warned to the entire membership at least 6 weeks in advance of the annual meeting.

WELCOME TO OUR NEWEST MEMBERS:

Sasha Kagle, Jim Brennen, Edward Eagan, & Charles Marshall

Thursdays Knights - Official Newsletter of the Chittenden County Chess Club

This first issue of TK has the primary purpose of getting chess players to the very important organizational meeting of the CCCC on March 25. Future issues of ***Thursdays Knights*** however, will be the Member's newsletter. It will be popular, useful and fun if we all participate by providing input. Games, chess news, chess related items for sale, questions, puzzles, articles about chess or chess history, reviews...AND PICTURES!!



Saint Joseph's School

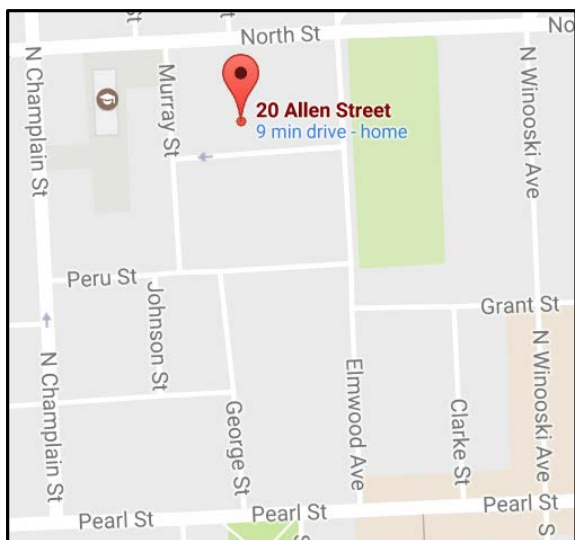
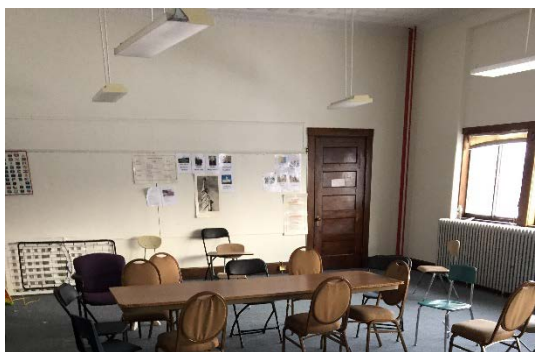
By David Carter

I have been working with the Burlington Parks and Recreation Department ("BPRD") to forge a relationship between the CCCC and the City of Burlington. Gaining status as an official BPRD program will enable the Club to access BPRD sites at no cost. It was through this BPRD connection that State Championship was held the Contois Auditorium at City Hall.

The Champlain Housing Trust (CHT) is purchasing the former Saint Joseph's School located at 20 Allen Street in Burlington. The CHT will lease the space to the City for a variety of BPRD programs including a Senior Center. According to the property manager the City has already begun renovations to add an elevator, new heating and air conditioning and cosmetic refurbishing.

The classroom pictured (left) would be available for use by the CCCC when we want it. There is a 20+ car parking lot dedicated to the site (entrance is on North Street), parking in the Church lot across the street from the school on Allen Street, and non-metered parking on the street. The construction noise and disruption may be a problem for some events, but I don't think that will be problem on Thursday evenings or weekends and it will not last forever.

In exchange for free rent, BPRD would like the Club to offer some chess instruction for adults and children. Frankly, I see this as an important part of the Mission of the Club and help to build participation on Thursday nights. In my opinion, operation of a weekend program for younger players should be top priority of the new CCCC Board of Directors.



This photo is of the parking lot behind the school as seen from Allen Street. The parking lot entrance is on North

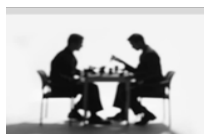
First Meeting of the Chittenden County Chess Club

Saturday, March 25th, Beginning Promptly at 9:00 AM

at the Shaw's Supermarket Community Room, 570 Shelburne Road, Burlington, VT

A G E N D A

1. Welcome & Introduction (9:00-9:10)
2. Adoption of CCCC Bylaws by Majority Voice Vote of persons present (9:10-9:15)
3. Nomination of Officers and Member at Large (time to volunteer!) (9:15-9:30 AM)
4. Election of Officers and Member at Large (9:30-9:35 AM)
5. Convene the first meeting of the (all persons are welcome; 9:35-11:00 AM)
 - a. Set Annual Dues and Membership Classes
 - b. Venue for Thursday Night Meetings.
 - c. New Member Outreach – Adult Workshops, Youth Programs
 - d. Other business to be brought before the Board.



Weekend Warrior

The *Weekend Warrior* will be a regular **Thursday Knights** article presenting games played by Club members in weekend chess events. A second planned feature will be *Thursday Night Fights* which will be a game played at the Thursday night meetings.

Many of you readers may have already seen this game that I played in January at the Portsmouth Open. Surprise, I have not gotten tired of playing it over it yet. –Dave Carter

Position after 3...e5

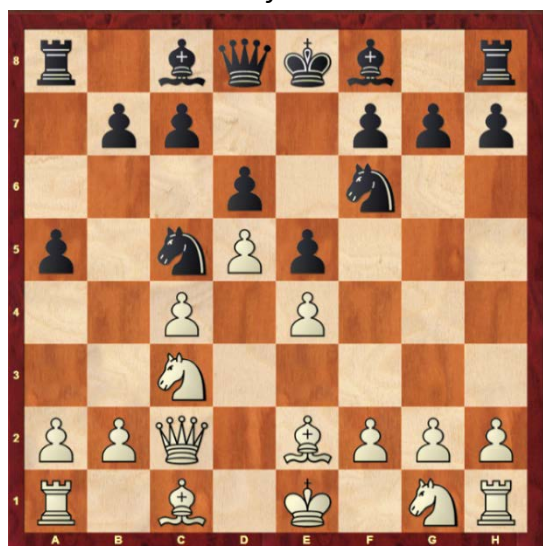
David Carter (2230) v (GM) Alexander Ivanov (2564) [E94]

Portsmouth NH Open (Rd 2), 01/14/2017

1.d4 Nf6 2.c4 d6 3.Nc3 e5 [diagram, right] This is the Old Indian Defense which is a sound opening, but not seen much.
4.d5 The inviting **4.dxe5 dxe5 5.Qxd8+ Kxd8 6.Bg5 c6 7.0-0-0+ Kc7** is a well-known position where white scores less than 40%. **4...Nbd7 5.e4 Nc5 6.Qc2 a5 7.Be2** This was the first critical position of the game [diagram, top left of next page]. Will the GM play ...Be7 and keep the game in less chartered waters or play ...g6 and head to a more familiar variation of the King's Indian Defense.



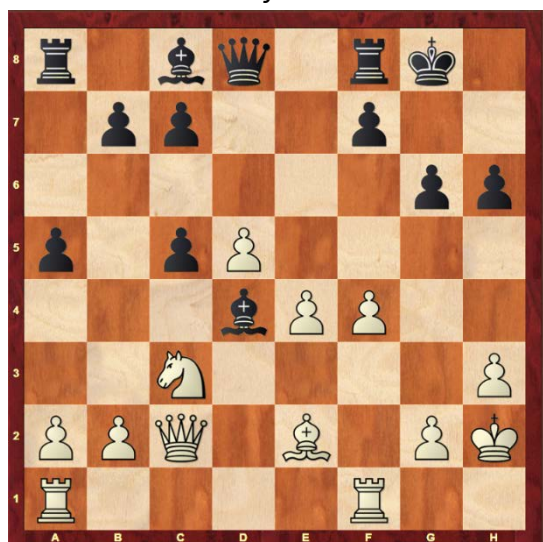
Position after 7. Be2



Position after 11. Be3



Position after 17. Kh2



7...g6 Whew, glad to see the KID. **8.Nf3 Bg7 9.0-0 0-0 10. Bg5 h6 11. Be3** [diagram, middle left] I have reached this position six times in OTB play, once in postal and many times in blitz. The normal way of arriving at this position is **1.d4 Nf6 2.c4 g6 3.Nc3 Bg7 4.e4 d6 5.Nf3 0-0 6.Be2 e5 7.d5** (More common is for White to play 7.0-0 when Black usually plays 7...Nc6 8.d5 Ne7 with three main moves for White 9.Ne1, 9.Nd2 and 9.b4) **7...Nbd7** (or 7...Na6) **8.0-0 Nc5 9.Qc2 a5 10.Bg5 h6 11.Be3** and we have reached the position in the game [diagram middle left].

11...Nh7 Black begins the common KID idea of moving the Nf6 and pushing the kingside pawns in an all-out attack on the White King as Ivanov does in this game. Other moves with this same idea are **11...Nd7** or even **11...Ne8**. The move **11...Nh5** almost forces White to play 12. g3 weakening White's kingside, but has the downside of making 12...f5 challenging to play because the knight on h5 can be left hanging if Black wants to respond to 13. exf5 with gxf5. There are several other possible eleventh moves for Black:

A. **11...Ng4** leads a position where white is a bit weak on the dark squares, but has a mobile pawn center and a lead in development after 12. Bxc5 dxc5 13. h3 Nf6 14. Nxe5 Nxd5 15. cxd5 Bxe5 16. f4 Bd4+ 17.Kh2 [diagram, below, left] 1-0 (42) Gligoric vs Langeweg, Amsterdam 1970;

B. **11...b6** This move shores up the knight on c5 allowing the center strengthening ...bxc5 if White ever captures there. However, this move allows **12. Nd2** and White's pieces are well positioned and cannot be hassled from g4 or h5 without allowing White to rid himself of his "bad" Be2 and reduce Black's attacking pieces on the kingside. **12...Bg4** (The other try is **12...Ng4 13. Bxg4 Bxg4 14. b3** I did not think 14. a3 was as good as 14. b3 here because after 14...a4 15.Bxc5 bxc5 16.Nxa4 Qg5 17.f3 Bd7 18.Nc3 h5 19.Nb5 Bh6 20.Nb1+/- with a plus for White) **14...Bd7 15.a3 f5 16.f3** My chess engine liked 16.exf5 (slightly better than 16.f3) 16...Bxf5 (16...gxf5 17. f3+/-) 17. Nde4+/-) **16...f4 17. Bf2 g5 18. b4 Nb7 19. c5?! Too fast. It's better to**

to build up with Rfc1 or perhaps Nb3 19...bxc5? (Black should have played 19...axb4 20. axb4 dxc5 21.bxc5 Nxc5 22.Bxc5 bxc5 23.Na4=) 20.bxc5 Now the a-pawn becomes weak 20...Nxc5 21.Bxc5 dxc5 22.Na4+/- Now returning to the mainline "B" after 13. f3 Bd7 14. b3 Nh5 15. g3 f5 16. exf5 gxf5 17. f4 Qe8 18.Rae1 is equal; ½-½ (36) Veingold (2450) v Suetin (2500) Tallinn 1980;

C. 11...Nh5 12. g3 Bd7 not 12...f5?! 13.Nh4 Nf4 14. Bxf4 g5 15.Bxg5 Qxg5 16.exf5+/-; and 12...Bh3 13.Rfe1 yields nothing. And after 13. Nd2 is equal, but I like White's game here.

12.Nd2 f5 13.f3 Possible was 13.Bxc5 dxc5 14.exf5 gxf5 (14...Bxf5 15.Bd3+/-) 15.f3+/- where Black has a damaged pawn structure and weak kingside, but also has 2 bishops.

13...f4 14. Bf2 Bd7 15. b3 g5 16.a3 h5 17.b4 and the race is on!

[diagram upper right]. 17...Na6 In a similar position, I played Qb3 to protect the b-pawn, but later analysis showed that was unnecessary after 18.c5! g4 The pawn is poison, if 18...axb4

19.axb4 Nxb4 20.Qb3 Rxa1 (if 20...Na6 21.c6+- decides matters) 21.Rxa1 dxc5 22.Bxc5+-. 19.c6 g3 [diagram middle right] GM Ivanov begins to throw everything at me. After 19...bxc6 I had planned 20. dxc6 Be6 21.b5 Nc5 22.Bxc5 dxc5

23.Na4+/- which looks good. 20.hxg3 fxg3 21. Bxg3 Qg5

22.cxd7?! This move gives away a decisive advantage to just a plus for White. Best is 22. cxb7, but during the game I thought,

"Without the Bd7, how am I going to get mated?" 22...Qxg3 23.Bxa6 Bh6! A good shot. 24.Qd3! Bf4? Ivanov was in moderate time pressure here; Against 24...Ng5 I had planned 25. f4 Nh3+ 26. Kh1 Nf2+ 27. Rxf2 Qxf2

28.Bxb7 with a big edge; the best try is 24...Rxa6 25.Ne2 Qg7 26.b5 Raa8 27.Rac1 Qxd7 but Black has a backward pawn on an open file, a weaker king position with heavy artillery still on the board and White's possible knight post at f5 looming. White has a good advantage. 25.Ne2 Qh2+ 26.Kf2 Qh4+ 27.g3 Qh2+ 28.Ke1

Bxg3+ 29.Nxg3 Qxg3+ 30.Ke2 Ng5 31.Qe3 This consolidates everything for White. 31...Kh7 32.Bxb7 Rab8

33.Bc6 axb4 34.axb4 Rxb4 35.Ra8 Rbb8 36.Rxb8 Rxb8 37.Qa7 Rd8 38.Qxc7 Nf7 39.Qb6 Qg2+ 40.Qf2 Qg5

41.Rg1 Qf6 42.Qh2 Qh6 43.Qh3 1-0 They don't come much better than that for me. My second victory over

a GM in a forty-five year career.

Position after 17. b4



Position after 19...g3

